



Back Office

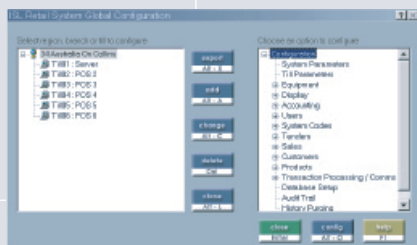
Enabler Back Office is the "backbone" of our systems. Back Office resides on the store server (dedicated or non-dedicated) as well as at the head office server (where applicable).

Back Office performs most of the control tasks within the store / enterprise such as:

- Product, style, price, and inventory management
- Customer management, marketing and promotions
- Employee management
- Central purchase order maintenance
- Location and channel management
- Loyalty / club maintenance
- Reporting



A unique module of our back office is Enabler Configurator. Enabler's Configurator is unique and sophisticated in the way it allows retail business to configure their POS system to suit their 'business rules'. All of which can be undertaken at Head Office and automatically broadcasted to relevant PC's in the enterprise.



This Global configuration feature means that considerable savings can be made in software maintenance, essentially no software support personnel need to go to stores for Enabler software maintenance tasks.

User classes can be established for specific user authorisations, addition of a new user is simply 'tied' to class.

- Unlimited tender types configured according to business rules
- New stores and tills are simply 'cloned' from existing stores or tills providing for a fast and accurate roll out and the ability to maintain standards across your systems.
- Peripheral device drivers and configuration [receipt printers, barcode scanners, touch screen, programmable keyboards, etc] all controlled by Enabler Configurator
- User Definable system & reason codes are setup in Back Office. These reason codes used for non-sales, discounts, in fact any on-standard till operation for reporting and authorisation purposes
- Database back up and location, history purging rules, transactional data, update interface periods, all setup in Enabler Configurator

